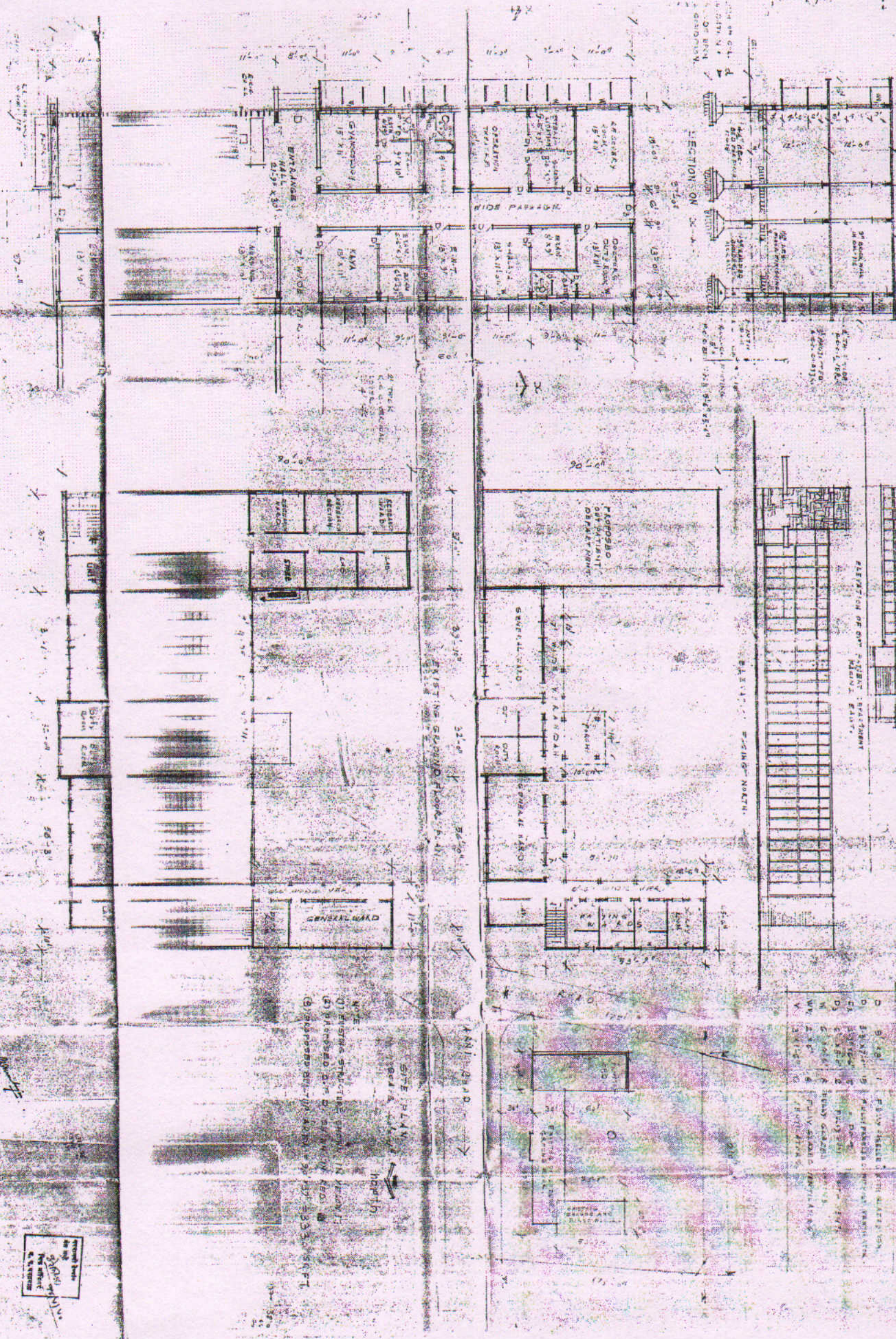


PROPOSED EXTENSION FOR OUT-PATIENT DEPARTMENT
OF SHRI K. L. KALBIRKAR AYURVEDIC HOSPITAL, YEOTMAL.

PROPOSED OUT-PATIENT DEPARTMENT
SECTION ON X-Y

FIRST FLOOR PLAN
Scale 1/4" = 1'-0"



NOTE:
(1) EXISTING STRUCTURE SHOWN IN KEY PLAN
(2) PROPOSED EXTENSION SHOWN IN RED
(3) PROPOSED EXTENSION AREA = 30' x 33' = 990 SQ. FT.

SITE PLAN

hospitals

TYPE	DESCRIPTION
D	FLYING CHAIR
B	FLYING CHAIR
A	FLYING CHAIR
C	FLYING CHAIR
E	FLYING CHAIR
F	FLYING CHAIR
G	FLYING CHAIR
H	FLYING CHAIR
I	FLYING CHAIR
J	FLYING CHAIR
K	FLYING CHAIR
L	FLYING CHAIR
M	FLYING CHAIR
N	FLYING CHAIR
O	FLYING CHAIR
P	FLYING CHAIR
Q	FLYING CHAIR
R	FLYING CHAIR
S	FLYING CHAIR
T	FLYING CHAIR
U	FLYING CHAIR
V	FLYING CHAIR
W	FLYING CHAIR
X	FLYING CHAIR
Y	FLYING CHAIR
Z	FLYING CHAIR

SECRETARY
SHRI K. L. KALBIRKAR
AYURVEDIC HOSPITAL
YEOTMAL

PROPOSED EXTENSION
AREA = 30' x 33' = 990 SQ. FT.

RECORD BOOK
No. 100
Date: 10/10/1950
By: [Signature]
For: [Signature]